

**NOTES:**

1. DO NOT SCALE THIS DRAWING.
2. MATERIALS OF CONSTRUCTION:  
SHELL, HOUSING W/BARREL, COVER = BRASS (ASTM-B16 H02, C36000), GOLD PLATED (.000003 MIN)  
CONTACT PIN = BRASS (ASTM-B16 H02, C36000), GOLD PLATED (.000050 MIN)  
INSULATOR - PTFE, ASTM D 1710 OR EQUIV.  
GASKET - SILICONE RUBBER, COLOR RED.  
CRIMP FERRULE - COPPER ALLOY, GOLD PLATED (.000003MIN)  
RETAINER RING = BeCu (QQ-C-530), NATURAL

**3. PERFORMANCE REQUIREMENTS:**

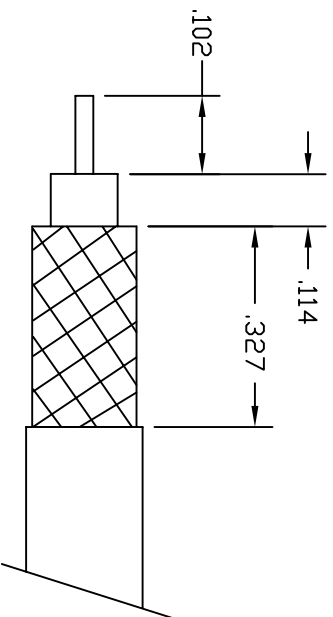
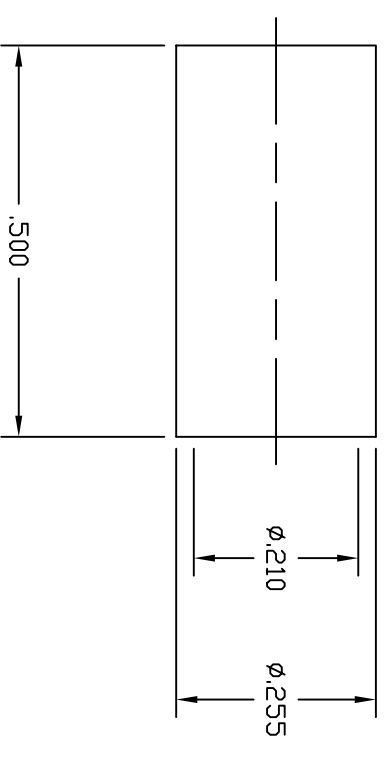
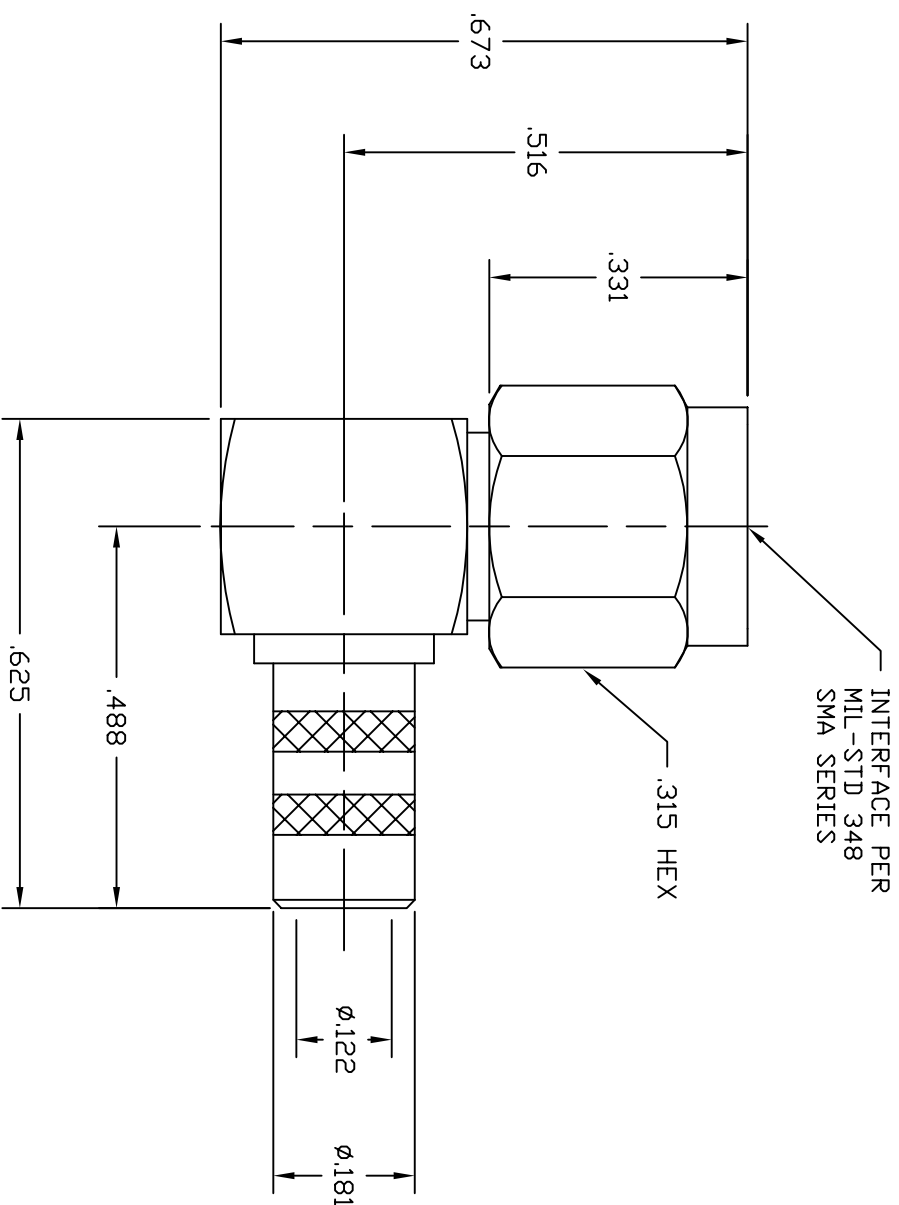
ELECTRICAL:

FREQUENCY RANGE - DC TO 12.4 GHz  
VSWR - 1.350:1 MAX  
DVP - 1000 VRMS

MECHANICAL:

CENTER CONTACT RETENTION - 4 LBS MIN

901-9873		REVISIONS			
DRAWING NO.	REV	DESCRIPTION	DATE	ECO	APPR
THIRD ANGLE PROJ.	A	OFFICIAL ENG. RELEASE TO MFG.	4/4/95	40350	PB/RAV
	B	REDRAWN ON AUTO-CAD; ALL NOTES REWRITTEN & UPDATED	8/28/96	41519	CPM/
	C	SEE SHEET 1	9/6/02	44186	CPM/



CABLE STRIPPING DIM'S

**CUSTOMER OUTLINE DRAWING**

ALL OTHER SHEETS ARE FOR INTERNAL USE ONLY

UNLESS OTHERWISE SPECIFIED, DIMENSIONS ARE IN INCHES AND TOLERANCES ARE:  
2 PLACE DECIMAL ±.015 (0,381 mm)  
3 PLACE DECIMAL ±.005 (0,127 mm)  
ANGLES ± 1°

NOTICE - These drawings, specifications, or other data (1) are, and remain the property of Amphenol Corp. (2) must be returned upon request; and (3) are confidential and not to be disclosed to any person other than those to whom they are given by Amphenol Corp. The furnishing of these drawings, specifications, or other data by Amphenol Corp., or to any other person to anyone for any purpose is not to be regarded by implication or otherwise in any manner licensing, granting rights or permitting such holder or any other person to manufacture, use or sell any product, process or design, patented or otherwise, that may in any way be related to or disclosed by said drawings, specifications, or other data.

**MATERIAL**

REFERENCE  
EAR 111-964413  
EAR 966278-0

**DRAWN**

P. BRENZEL 12/8/94

**ENGINEER**

RAV 3/31/95

**APPROVED**

B. GLEISSNER 8/23/96

CAD FILE H:\PETE\SMA\901\ASSY\9873000C

**TITLE**

SMA PLUG  
RIGHT ANGLE  
CRIMP TYPE  
FOR RG-58/U

**Amphenol**

Amphenol Corporation  
RF/Microwave Operations  
Danbury, Conn. U.S.A. 06810

SCALE: 4:1

SHEET 2 OF 2

CODE ID 74868  
DWG SIZE B  
DRAWING NO. 901-9873

REV C